



Bunky's Charter Boats Bait and Tackle Shop offers most everything you'll need for a great day on the water and a great fishing experience. From hand-made lures and live bait to sandwiches and beverages, Bunky's has it all.

**Open 7 Days a Week
During the Fishing Season!**

Summer Hours:

(April 16th - December 15th):

6:00am - 7:00pm Monday thru Friday

5:30am - 7:00pm Saturdays and Sundays

(extended hours available for

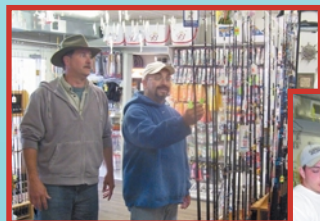
Night Fishing Charters and Evening Cruises)

Winter Hours:

(December 16th - April 15th):

10:00am - 5:00pm Tuesday thru Saturday

Closed Sunday and Monday



**ATM
Machine
Inside**

**Gift
Certificates
Available**



From Baltimore:

Take I-97 south, then follow exit 7 to Route 3 south. Continue Route 3 to Route 301 south. Take right-hand exit for Route 4 south to Solomons Island. Once in Solomons, take the right-lane exit "Solomons Island Rd. South - Calvert Marine Museum". At the end of the exit, turn left at the stop sign located under the bridge. Stay to the right at the next intersection to follow Route 2 south. Bunky's Charter Boats is located 1/2 mile on the left.

From Washington D.C. I-495 Beltway:

Take exit 11A for Route 4 south to Solomons Island MD. Once in Solomons, take the right-lane exit "Solomons Island Rd. South - Calvert Marine Museum". At the end of the exit, turn left at the stop sign located under the bridge. Stay to the right at the next intersection to follow Route 2 south. Bunky's Charter Boats is located 1/2 mile on the left.

From Waldorf:

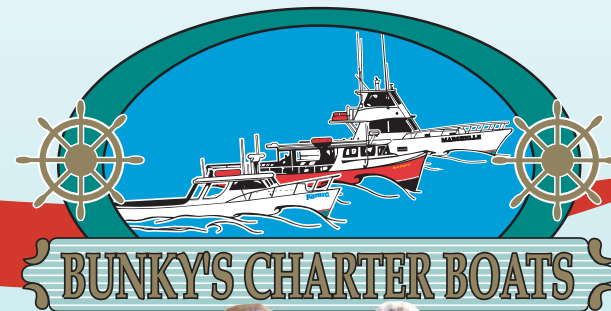
Take Route 5 south to Route 235 south toward Lexington Park. Turn left to follow Route 4 north to Solomons Island. Follow signs to Solomons and cross over "Governor Thomas Johnson Bridge". Exit right at Solomons Town Center towards Calvert Marine Museum. Turn right at the stop sign at the end of the exit. Bunky's Charter Boats is located 1/2 mile on the left.

From Richmond:

Take I-95 north to Route 301 north toward "Governor Harry Nice Bridge". Continue Route 301 north to Route 234. Turn right to take Route 234 east toward Budd Creek. Continue Route 234 toward Leonard Town. Merge right onto Route 5 toward Leonard Town. Continue through Leonard Town traffic light on Route 5 south. Turn left to take exit - "St. Andrews Church Road - Route 4 north". Follow signs to Solomons, approx. 11 miles. Continue and cross "Governor Thomas Johnson Bridge". Exit right at Solomons Town Center Toward Calvert Marine Museum. Turn right at the stop sign at the end of the exit. Bunky's Charter Boats is located 1/2 mile on the left.

From Capital Heights:

Take Route 4 south to Solomons Island. Once in Solomons, take the right-lane exit "Solomons Island Rd. South - Calvert Marine Museum". At the end of the exit, turn left at the stop sign located under the bridge. Stay to the right at the next intersection to follow Route 2 south. Bunky's Charter Boats is located 1/2 mile on the left.



CHARTER BOATS

Fishing Charters • Head Boats

Private Cruises • Dinner Cruises

Rental Boats • Fishing Licenses

Fishing Tackle • Bait

Crabbing Supplies & Nets

Breakfast Sandwiches • Box Lunches

Sodas • Beer • Ice

Fuel Pier with Gas and Diesel

**Fishing for
Rockfish, Croaker, Spot,
Bluefish, Flounder,
Trout and Perch**

14448 Solomons Island Rd. South
Solomons, Maryland 20688
Phone: (410) 326-3241
www.bunkyscharterboats.com

FISHING CHARTERS • HEAD BOATS (based on availability) • PRIVATE CRUISES • DINNER CRUISES

Please visit our website at www.bunkyscharterboats.com for more information and our rates.



Charters Captained by
Captain Bunky



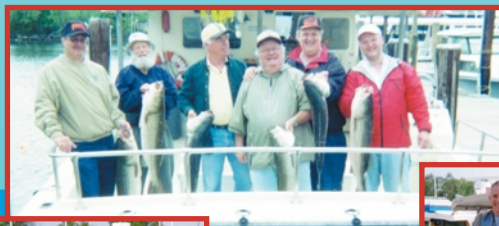
The "Kathy C" is a 40 foot Custom Bay Built vessel powered by a 435 Caterpillar Diesel engine, is United States Coast Guard inspected and equipped with modern electronics and the latest safety equipment. There is plenty of fishing space for a maximum of 13 passengers, her cabin is heated and she has a dinette and bathroom for your comfort.



Charters Captained by
Captain Simon



The "Red Osprey" is a fast, 42 foot Custom Bay Built vessel by Hulls Unlimited, powered by a 375 Caterpillar Diesel engine, is United States Coast Guard inspected and equipped with modern electronics and the latest safety equipment. Her large canopy allows for plenty of fishing space for a maximum of 15 passengers while protecting you from the weather. Her cabin is heated, and there is a dinette and bathroom for your comfort.



Charters Captained by
Captain Ricky or Captain Brian



The "Marchelle" is a 47 foot Tiffany Yacht vessel powered by twin 375 John Deere Diesel engines, is United States Coast Guard inspected and equipped with modern electronics and the latest safety equipment. She has plenty of room inside and out for large parties. "The Marchelle's" salon is spacious and heated with plenty of seating and there is a bathroom aboard for your comfort. Her spacious cabin allows for a walk-around deck and a canopy to take cover from the weather while you fish.

